

GYGER LEVAGES

Autogrues et transports spéciaux

Gyger Levages Sàrl

Neuchâtel – Jura – Berne – Fribourg – Vaud – Genève – Valais

info@gygerlevages.ch

Grues mobiles de 40 à 450 to

Dépannage 24 / 24 h

Transports divers

www.gygerlevages.ch

Liebherr MK 110

Capacité maximale : 8 tonnes

Capacité de levage à portée maximale : 1.8 tonne

Hauteur maximale sous crochet : 33 mètres

Portée maximale : 52 mètres

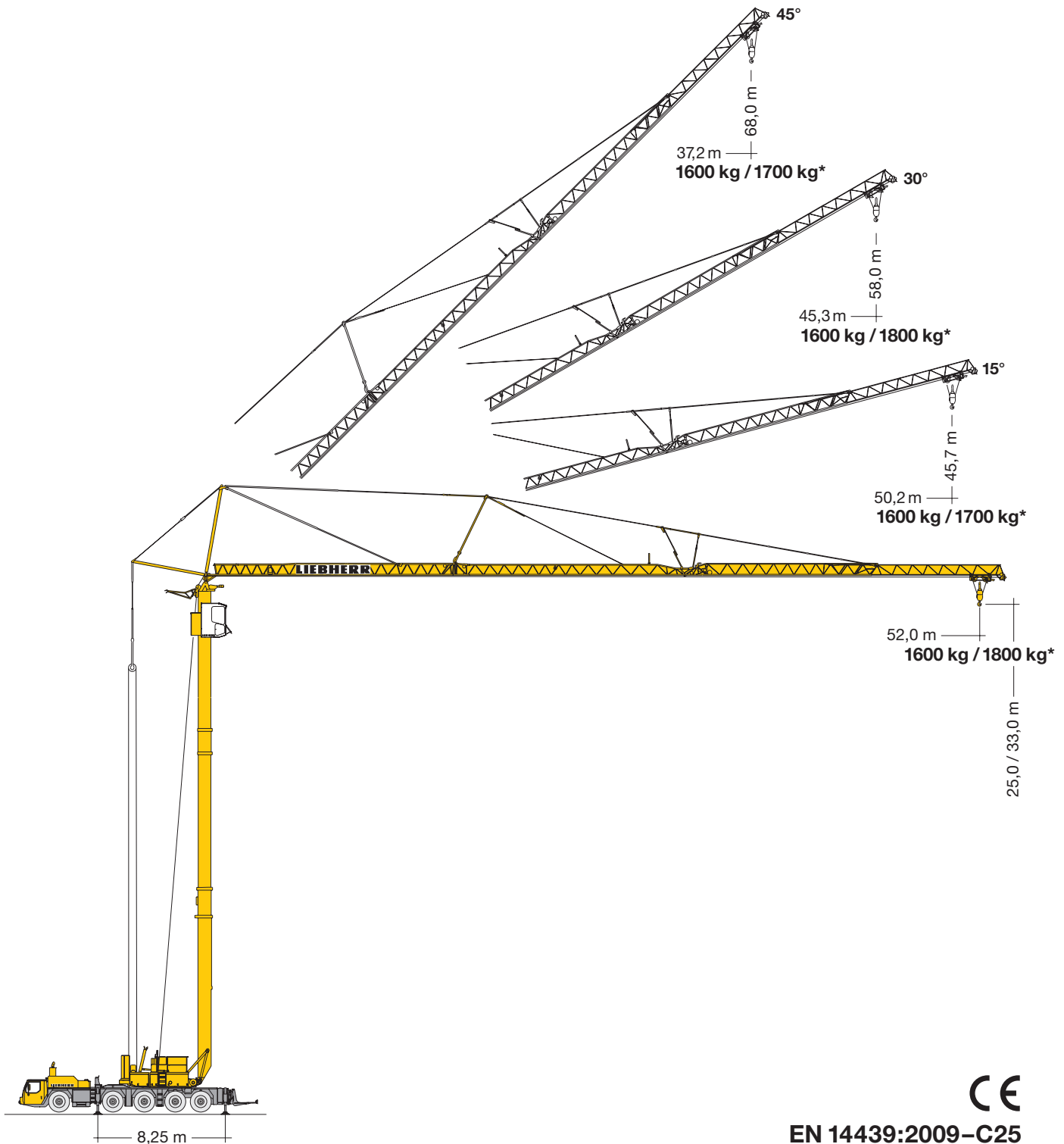
Position de flèche relevée : 15° / 30° / 45°

Poids de la machine : 60 tonnes



Mobilbaukran MK 100 / MK 110*

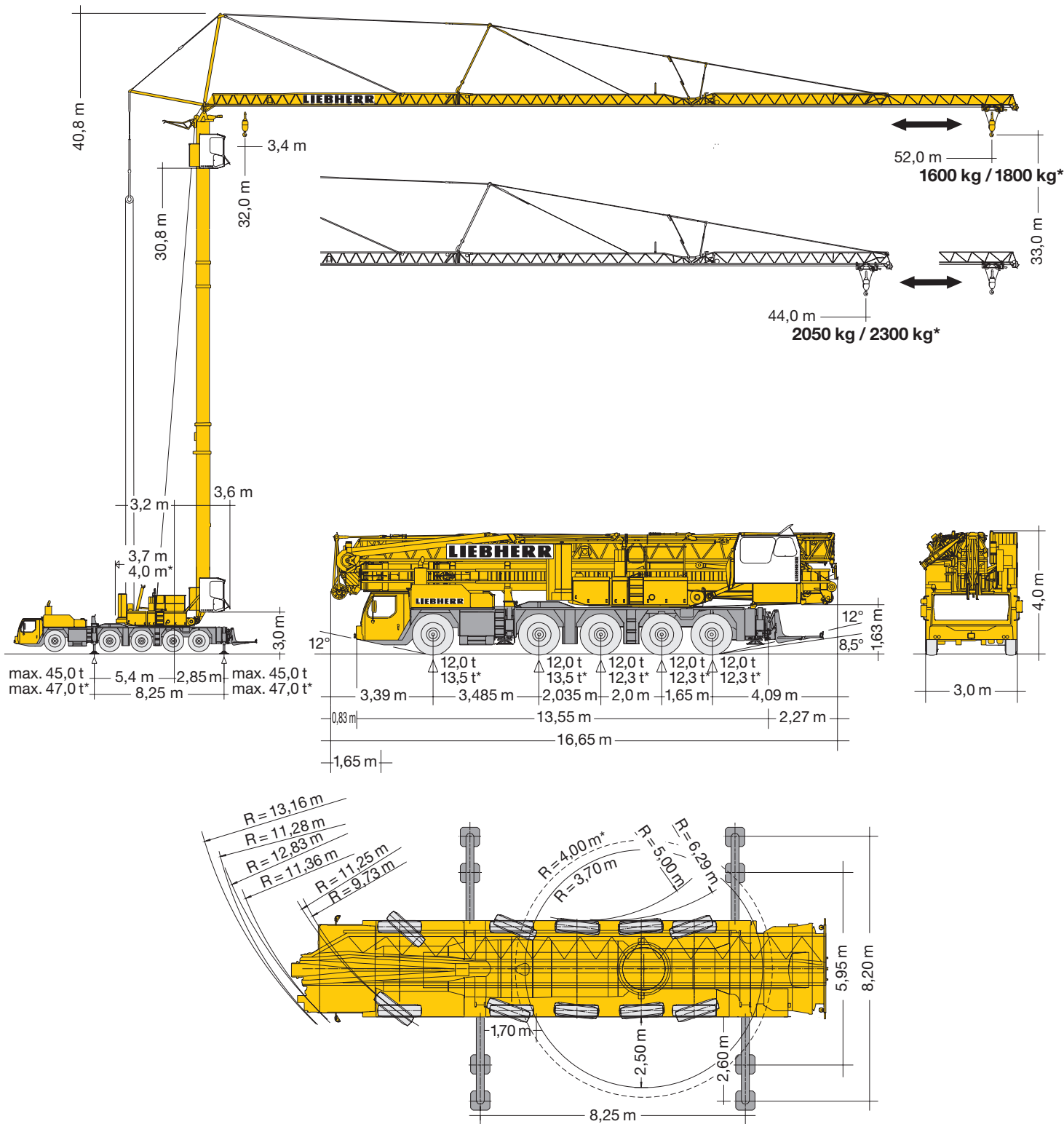
Mobile construction crane / Grue mobile de construction
Autogrù edile / Grúa móvil de construcción
Mobiele torenkraan / Мобильный строительный кран



CE

EN 14439:2009-C25

LIEBHERR



Gewicht

Weight / Poids / Peso / Peso / Gewicht / Macca

Gesamtgewicht 60 000 kg

Total weight
Poids total
Peso totale
Peso total
Totaalgewicht
Общая масса

* **MK 110 mit 3,8 t Zusatzballast** / MK 110 with 3.8 t additional ballast / MK 110 avec lest additionnel de 3,8 t / MK 110 con zavorra addizionale da 3,8 t / con contrapeso adicional de 3,8 t / MK 110 met 3,8 t extra ballast / с дополнительным балластом 3,8 т

**60 000 kg
+ 3 800 kg**

Achslasten

Loads per axle / Charges par essieu / Carichi per asse / Peso por eje / Aslasten / Нагрузка на мосты

Zusatzballast für Straßentransport demontieren, Ländervorschriften beachten.

Remove additional ballast for road transport, observe country-specific regulations.

Démonter le lest additionnel pour le transport sur route, respecter les spécifications des pays individuels.

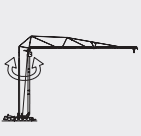
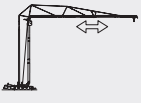

Smontare la zavorra aggiuntiva per il trasporto su strada, rispettare le norme nazionali.


Desmontar contrapesos adicionales para tránsito en carretera, véase condiciones en cada país.

Extra ballast dient voor wegtransport gedemonteerd te worden, landvoorschriften navolgen.


Для транспортировки по дорогам демонтировать дополнительный балласт, учитывать предписания, действующие для данной страны.

> 12,0 t

| | | |
|--|----------------|-----------|
|  | 0 ↔ 0,8 U/min | 7,5 kW FU |
|  | 0 ↔ 73,0 m/min | 4,0 kW FU |
|  | 0 - 30° | 2 min. |

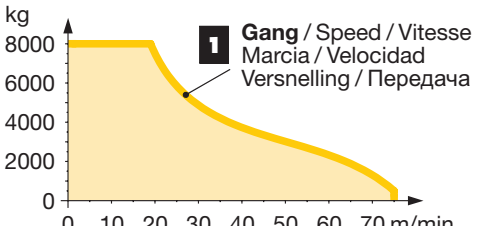


30,0 kW FU
WIW 240 KY 003





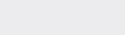


↔ **stufenlos** / stepless / régl. continu
regl. progressiva / sin escalones / traploos
Бесступенчатый kg m/min


| | | |
|----------|------|--------|
| 1 | 8000 | 0 ↔ 19 |
| | 500 | 0 ↔ 75 |



1 Gang / Speed / Vitesse
Marcia / Velocidad
Vernelling / Передача

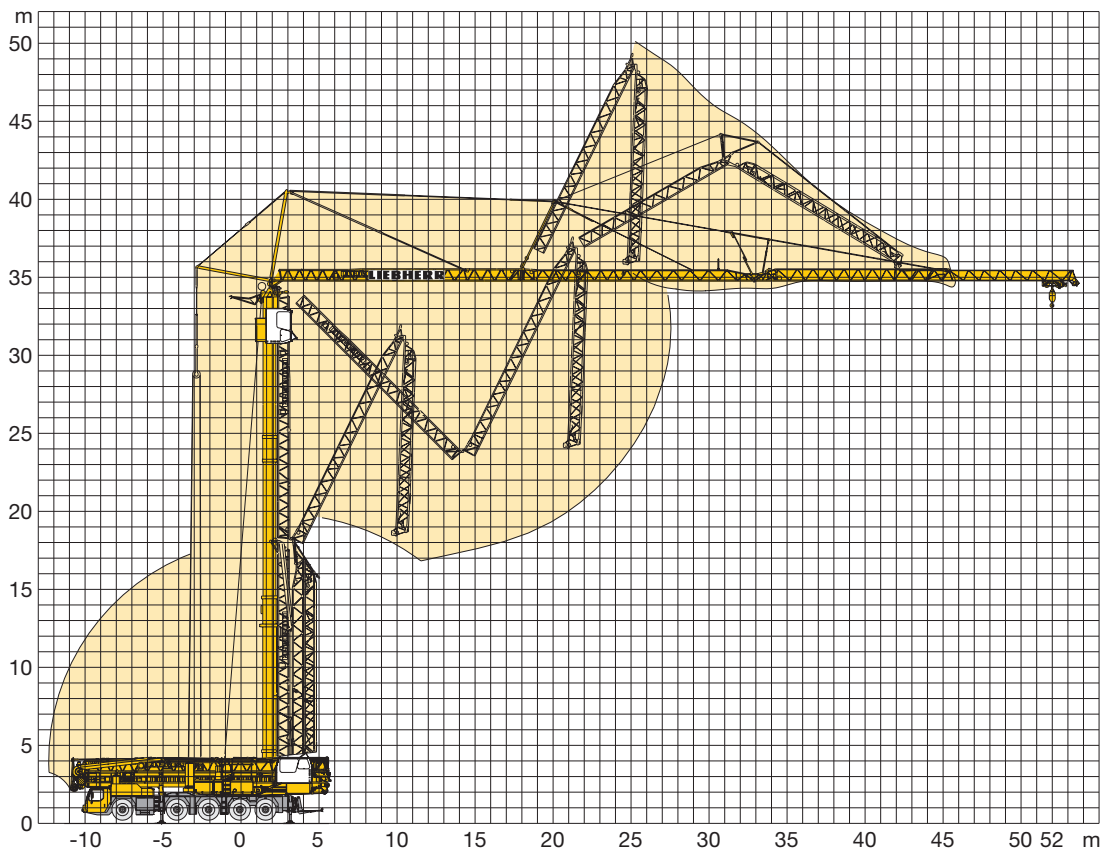
| | | | | | | | | | | | | | | | | |
|--|---|-----|-----|-----|------|------|------|------|------|------|------|------|------|-----|-----|---|
|  |  | 1 | 2 | 3 | 4 | 5 | 6 | 7 | 8 | 9 | 10 | 11 | 12 | R1 | R2 |  |
|  | km/h | 5,2 | 6,7 | 8,6 | 11,1 | 14,0 | 18,0 | 23,7 | 30,5 | 39,2 | 50,4 | 63,9 | 75,0 | 5,6 | 7,2 | 54% |
|  | km/h | 2,3 | 3,0 | 3,8 | 5,0 | 6,3 | 8,1 | 10,6 | 13,6 | 17,6 | 22,5 | 28,6 | 36,7 | 2,5 | 3,2 | > 60% |

| | | | | |
|--|------------|------------|--|-----------------------------|
|  | 14.00 R 25 | BGL |  | C.0.08.0100 C.0.08.0112* |
|--|------------|------------|--|-----------------------------|

| | | | |
|---|------------------------|-----------|------------|
|  | 400 V | Hz | kVA |
| 96,0 m | 5 x 16 mm ² | 50 | 43,0 |

Aufstellvorgang

Erection procedure / Déroulement de montage / Procedimento di montaggio
Procedimiento de montaje / Opstelling van de mobiele torenkraan / Процесс развертывания



Traglasten MK 100

Lifting capacities MK 100 / Capacités de levage MK 100
Capacità di carico MK 100 / Capacidad de carga de la MK 100
Hijstabel MK 100 / Грузоподъемность крана MK 100

Max. Lastmoment 116 mt

Max. load moment 116 mt / Moment de charge max. 116 mt
Momento di carico max 116 tm / Momento de carga máx. 116 mt
Maximale lastmoment 116 tm / Макс. грузовой момент 116 тм

Ausleger horizontal

Jib horizontal / Flèche horizontale / Braccio orizzontale
Pluma horizontal / Giek horizontaal / Стрела в горизонтальном положении

| 8,25 m x 8,20 m | m | m / kg | m / kg | | | | | | | | | | | | | | | | |
|-----------------------------|------|------------------|--------|------|------|------|------|------|------|------|------|------|------|------|------|------|------|------|------|
| | | | 14,0 | 18,0 | 22,0 | 26,0 | 28,0 | 30,0 | 32,0 | 34,0 | 36,0 | 38,0 | 40,0 | 42,0 | 44,0 | 46,0 | 48,0 | 50,0 | 52,0 |
| max. 8,0 Bft (20 m/sec.) | 52,0 | 3,4-14,0 8000 | 8000 | 5930 | 4670 | 3830 | 3500 | 3220 | 2980 | 2760 | 2570 | 2400 | 2250 | 2120 | 1990 | 1880 | 1780 | 1690 | 1600 |
| | 44,0 | 3,4-14,5 8000 | 8000 | 6150 | 4830 | 3950 | 3610 | 3320 | 3060 | 2840 | 2650 | 2470 | 2320 | 2180 | 2050 | | | | |

Außer Betrieb keine Demontage notwendig. / Crane does not need to be disassembled when it is not in operation. / La grue n'a pas besoin d'être démontée lorsqu'elle est mise au repos. / Smontaggio non necessario, quando la gru è fuori servizio. / No es necesario desmontar la grúa en caso de no trabajar con ella. / Indien niet in gebruik, is geen demontage noodzakelijk. / Вне работы демонтаж не требуется.

Auslegersteilstellungen

Steep angle positions / Flèche en position relevée
Posizione impennata del braccio / Inclinación de pluma / Hoofdgiekstand / Положение стрелы под углом

| 8,25 m x 8,20 m | m | m / kg | 15° | | | | | | | 45° | | | | | | |
|-----------------------------|------|--------|------------|------|------------|------|--|--|--|-----|--|--|--|--|--|--|
| | | | m | kg | m | kg | | | | | | | | | | |
| max. 8,0 Bft (20 m/sec.) | 52,0 | | 3,4 - 50,2 | 1600 | 3,4 - 37,2 | 1600 | | | | | | | | | | |
| | 44,0 | | 3,4 - 42,5 | 1700 | 3,4 - 31,5 | 1700 | | | | | | | | | | |

| 8,25 m x 8,20 m | m | m / kg | 30° | | | | | | | | | | | | | | | | |
|-----------------------------|------|------------------|------|------|------|------|------|------|------|------|------|------|------|------|------|------|------|------|------|
| | | | 14,0 | 16,0 | 18,0 | 20,0 | 22,0 | 24,0 | 26,0 | 28,0 | 30,0 | 32,0 | 34,0 | 36,0 | 38,4 | 40,0 | 42,0 | 44,0 | 45,3 |
| max. 8,0 Bft (20 m/sec.) | 52,0 | 3,4-14,0 6000 | 6000 | 5230 | 4630 | 4140 | 3730 | 3390 | 3100 | 2850 | 2640 | 2450 | 2280 | 2130 | 1970 | 1870 | 1760 | 1660 | 1600 |
| | 44,0 | 3,4-15,0 6000 | 6000 | 5540 | 4900 | 4390 | 3960 | 3600 | 3300 | 3030 | 2810 | 2610 | 2430 | 2270 | 2100 | | | | |

Traglasten MK 110

Lifting capacities MK 110 / Capacités de levage MK 110
Capacità di carico MK 110 / Capacidad de carga de la MK 110
Hijstabel MK 110 / Грузоподъемность крана MK 110

Max. Lastmoment 121 mt

Max. load moment 121 mt / Moment de charge max. 121 mt
Momento di carico max 121 tm / Momento de carga máx. 121 mt
Maximale lastmoment 121 tm / Макс. грузовой момент 121 тм

Ausleger horizontal

Jib horizontal / Flèche horizontale / Braccio orizzontale
Pluma horizontal / Giek horizontaal / Стрела в горизонтальном положении

| 8,25 m x 8,20 m | m | m / kg | m / kg | | | | | | | | | | | | | | | | |
|-----------------------------|------|------------------|--------|------|------|------|------|------|------|------|------|------|------|------|------|------|------|------|------|
| | | | 14,0 | 18,0 | 22,0 | 26,0 | 28,0 | 30,0 | 32,0 | 34,0 | 36,0 | 38,0 | 40,0 | 42,0 | 44,0 | 46,0 | 48,0 | 50,0 | 52,0 |
| max. 8,0 Bft (20 m/sec.) | 52,0 | 3,4-14,7 8000 | 8000 | 6370 | 5060 | 4180 | 3830 | 3530 | 3280 | 3050 | 2850 | 2670 | 2500 | 2360 | 2230 | 2100 | 1990 | 1890 | 1800 |
| | 44,0 | 3,4-15,1 8000 | 8000 | 6550 | 5220 | 4300 | 3950 | 3640 | 3380 | 3140 | 2940 | 2750 | 2590 | 2440 | 2300 | | | | |

Außer Betrieb keine Demontage notwendig. / Crane does not need to be disassembled when it is not in operation. / La grue n'a pas besoin d'être démontée lorsqu'elle est mise au repos. / Smontaggio non necessario, quando la gru è fuori servizio. / No es necesario desmontar la grúa en caso de no trabajar con ella. / Indien niet in gebruik, is geen demontage noodzakelijk. / Вне работы демонтаж не требуется.

Auslegersteilstellungen

Steep angle positions / Flèche en position relevée
Posizione impennata del braccio / Inclinación de pluma / Hoofdgiekstand / Положение стрелы под углом

| 8,25 m x 8,20 m | m | m / kg | 15° | | | | | | | 45° | | | | | | |
|-----------------------------|------|--------|------------|------|------------|------|--|--|--|-----|--|--|--|--|--|--|
| | | | m | kg | m | kg | | | | | | | | | | |
| max. 8,0 Bft (20 m/sec.) | 52,0 | | 3,4 - 50,2 | 1700 | 3,4 - 37,2 | 1700 | | | | | | | | | | |
| | 44,0 | | 3,4 - 42,5 | 1700 | 3,4 - 31,5 | 1700 | | | | | | | | | | |

| 8,25 m x 8,20 m | m | m / kg | 30° | | | | | | | | | | | | | | | | |
|-----------------------------|------|------------------|------|------|------|------|------|------|------|------|------|------|------|------|------|------|------|------|------|
| | | | 14,0 | 16,0 | 18,0 | 20,0 | 22,0 | 24,0 | 26,0 | 28,0 | 30,0 | 32,0 | 34,0 | 36,0 | 38,4 | 40,0 | 42,0 | 44,0 | 45,3 |
| max. 8,0 Bft (20 m/sec.) | 52,0 | 3,4-14,7 6000 | 6000 | 5530 | 4930 | 4430 | 4020 | 3680 | 3380 | 3120 | 2890 | 2700 | 2520 | 2360 | 2190 | 2090 | 1970 | 1860 | 1800 |
| | 44,0 | 3,4-15,8 6000 | 6000 | 5910 | 5250 | 4710 | 4260 | 3890 | 3570 | 3290 | 3050 | 2840 | 2650 | 2480 | 2300 | | | | |